
SCHOOL UNIFORM

GIRLS

1. White short sleeved open-collar blouse with piping and school badge.
2. Maroon school skirt. Length of skirt - not shorter than four fingers above the knee when kneeling.
3. Black school shoes with short, white socks. Socks must be folded over at all times.
4. Wearing the blazer, jersey or pullover is optional, but the blazer must be worn during assembly and on official outings.
5. Provincial / representative sports jackets may be worn only on Fridays.
6. If any other jacket is worn, it will be confiscated.
7. During winter (2nd and 3rd terms) either short, white stocks or "blackmail" stockings may be worn.
8. Long sleeved blouses, ties and boys' grey socks are prohibited.
9. On very cold days, below 18°C, the full Werda track suit with the Werda sport shirt may be worn.

BOYS

1. White short sleeved open-collar shirt with school badge. NO long-sleeved shirts during first and fourth terms.
2. Long grey trousers with grey socks.
3. Black school shoes with laces.
4. Grey or black belt without rivets, studs or embellished buckles.
5. Wearing the blazer, jersey or pullover is optional, but the blazer must be worn with the tie, during assembly and on official outings.

6. Provincial / representative sports jackets may be worn only on Fridays.
7. If any other jacket is worn, it will be confiscated.
8. During winter (2nd and 3rd terms) a white shirt with a button-up collar, short or long sleeved, and tie is worn. NO badge.
9. It is optional for the boys to wear a tie during summer, but it may be worn only with a short-sleeved shirt with a button-up collar without a badge. However, ties that are removed during the school day, will be confiscated.
10. On very cold days, below 18°C, the full Werda track suit with the Werda sport shirt may be worn.

SPORTSWEAR

**Please note that all our school- and sportswear can be purchased from Schoolwear Centre.
The white PT-shirt is only available at the school.**

PHYSICAL EDUCATION / LIFE ORIENTATION

The white Werda PT-shirt with black shorts for both the boys and the girls.
(PT-shirts available from Mrs. Gouws @ R60 each.)

SWIMWEAR

Black Speedo swimsuit (black bathing-trunks are acceptable for boys) and the maroon Werda swimming cap (ordered through the school)



CRICKET

Long white trousers, maroon Werda golf shirt and white cricket shoes.

RUGBY

First team : First team rugby jersey, white pants, first team rugby socks and rugby shoes.

Other teams : Werda rugby jersey, black pants, maroon rugby socks and rugby shoes.

HOCKEY

First team : First team uniform, hockey socks and hockey shoes.

Other teams : Pleated maroon skirt, maroon ski-pants, maroon golf shirt, hockey socks with hockey shoes or sneakers.

NETBALL

First team : First team uniform, hockey socks and hockey shoes.

Other teams : Pleated maroon skirt, maroon ski-pants, maroon golf shirt, hockey socks with hockey shoes or sneakers.

**ATHLETICS & CROSS COUNTRY**

Werda shorts, athletic vest and sneakers.

SUPPLIERS OF UNIFORMS

Schoolwear Centre
511 South Coast Road
Clairwood

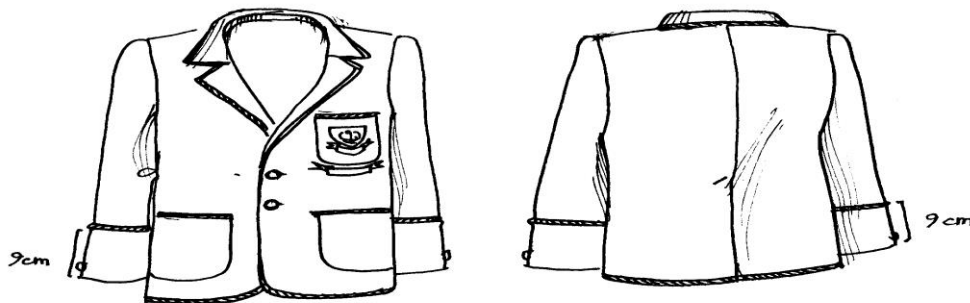
Tel No : 031 - 465 7890

COLOURS

The awarding of colours for academics, sport and culture is based on performance, reliability and ambassadorship and is worn on the blazer as follows:

- Half Colours : Fabric bar (from Grade 8)
- Full Colours : Fabric bar, plus cord 90mm from the edge of the sleeve and on the upper edge of the upper pocket. (from Grade 8)
- Honours : Honorary badge with laurel wreath (available at the school), fabric bar, piping as for full colours and on the upper edge of the lower pockets and around the outer edge of the blazer. (from Grade 10)

Honours



Full Colours

